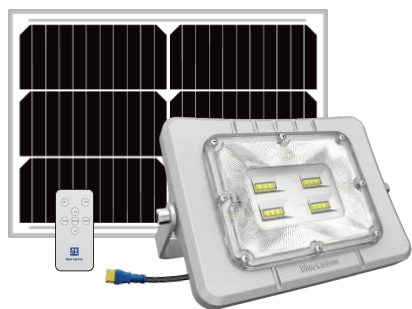


SOLAR FLOOD LIGHT

BCT-WR1.0

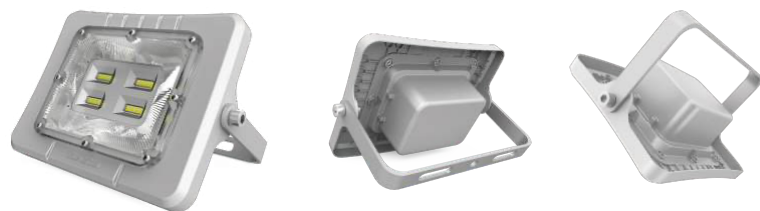


Product Parameters

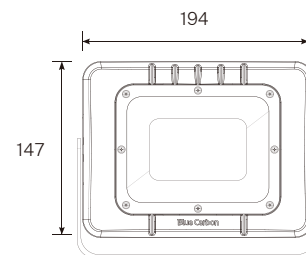
Solar Panel	5V/20W (Mono)
Battery	3.2V/10Ah LiFePO ₄ Battery
Light Power	800lm

Lighting Time:
6+X/Intelligent power control, and can use remote control to adjust brightness and working mode.

Installation Way:
Install on the ground, pole, billboard, post or wall.

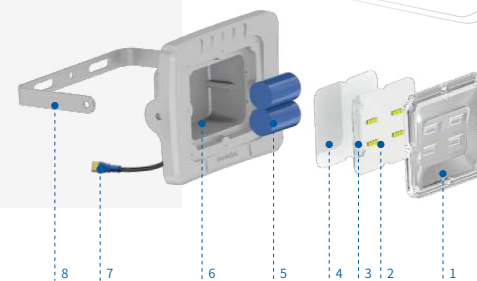


Product Size (Unit: mm)



Product Details

- 1- PC Outdoor Optical Lens
- 2- Imported High LED Lamp Beads
- 3- Control & Drive Integrated Lamp Board
- 4- Radiating Plate
- 5- LiFePO₄ Battery
- 6- Aluminum Magnesium Alloy Lamp Case
- 7- Gold Plated Plug
- 8- Bracket



SOLAR FLOOD LIGHT

BCT-WR2.0/3.0/4.0



Product Parameters

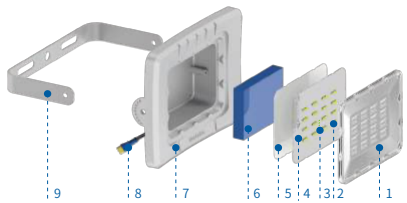
	BCT-WR2.0	BCT-WR3.0	BCT-WR4.0
Solar Panel	5V/30W (Mono)	5V/45W (Mono)	5V/50W (Mono)
Battery	3.2V/20Ah LiFePO ₄ Battery	3.2V/30Ah LiFePO ₄ Battery	3.2V/40Ah LiFePO ₄ Battery
Light Power	1200lm	2100lm	3000lm

Lighting Time:

6+X/Intelligent power control, and can use remote control to adjust brightness and working mode.

Installation Way:

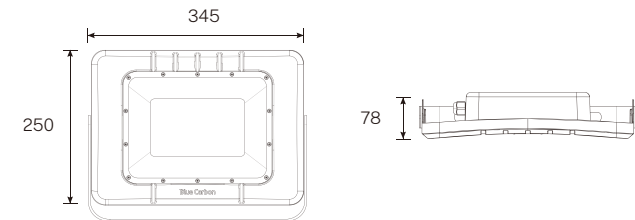
Install on the ground, pole, billboard, post or wall.



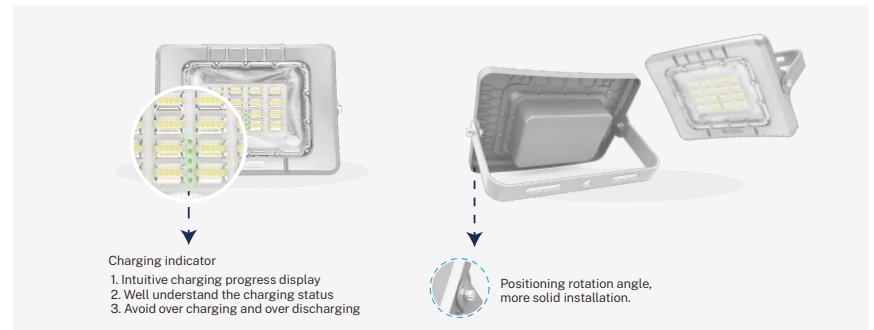
- | | |
|--|---------------------------------------|
| 1. PC Outdoor Optical Lens | 6. LiFePO ₄ Battery |
| 2. Imported High LED Lamp Beads | 7. Aluminum Magnesium Alloy Lamp Case |
| 3. Charging Indicator | 8. Gold Plated Plug |
| 4. Control & Drive Integrated Lamp Board | 9. Bracket |
| 5. Radiating Plate | |



Product Size (Unit: mm)



Function:



SOLAR FLOOD LIGHT

BCT-WR5.0/6.0

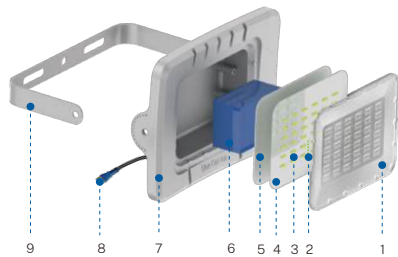


Product Parameters

	BCT-WR5.0	BCT-WR6.0
Solar Panel(Mono)	5V/65W (Mono)	5V/70W (Mono)
Battery	3.2V/50Ah LiFePO ₄ Battery	3.2V/60Ah LiFePO ₄ Battery
Light Power	3600lm	4200lm

Lighting Time:
6+X/Intelligent power control, and can use remote control to adjust brightness and working mode.

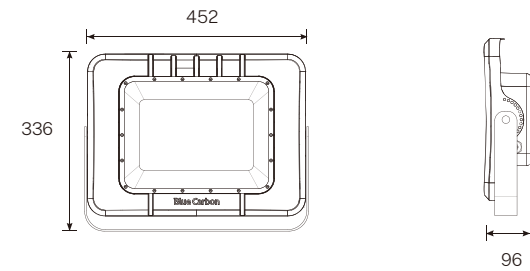
Installation Way:
Install on the ground, pole, billboard, post or wall.



- 1. PC Outdoor Optical Lens
- 2. Charging Indicator
- 3. Imported High LED Lamp Beads
- 4. Control & Drive Integrated Lamp Board
- 5. Radiating Plate
- 6. LiFePO₄ Battery
- 7. Aluminum Magnesium Alloy Lamp Case
- 8. Gold Plated Plug
- 9. Bracket



Product Size (Unit: mm)



Function:

