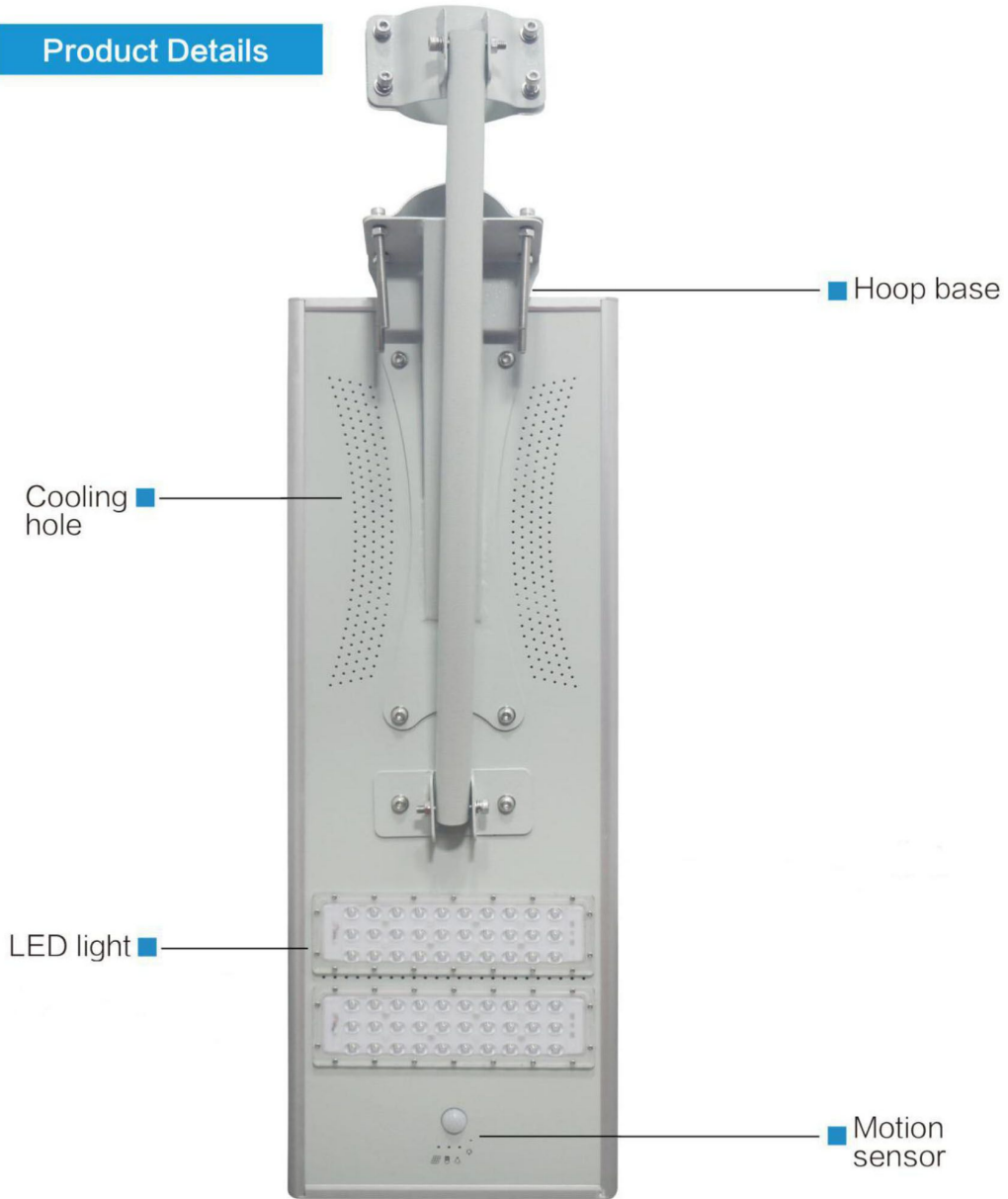


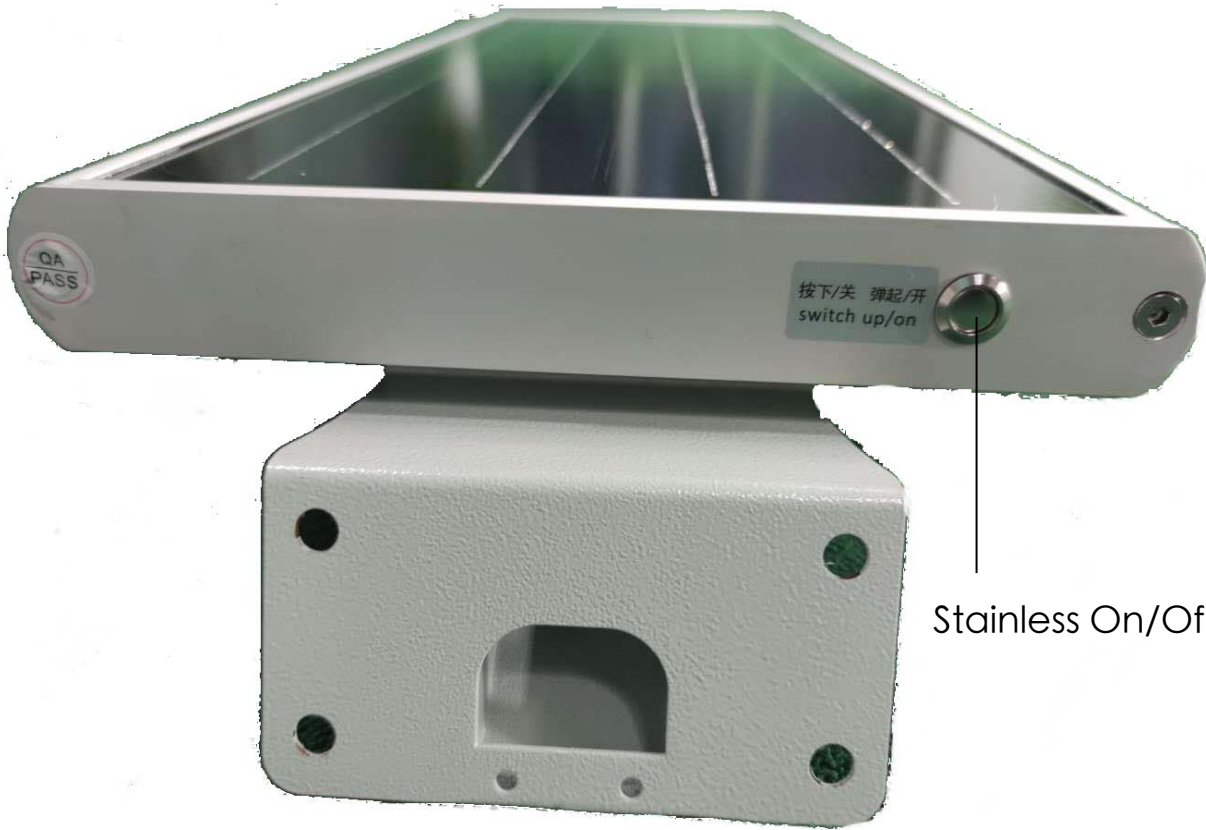


SL series specifications

Product Details



Product Details



Stainless On/Off Button

Specification

Light source	40W
Material of Casing	Die—cast Aluminium
Solar panel	Hight Efficiency Monno crystalline Silicon 40W
Battery	32700 type LiFePO4 battery Single unit 3.2V 6000mAh 3.2V 48AH(8units in Parallel)
Human body sensing	Yes
Product size	920*295*44mm
LED chips	SMD, 3.2V LED lamp output
Luminous	4500lm when battery full
Irradiated area	min 40m 140°
Visual angle	70°
Color temperature	6500k-7000k
LED Lifetime	50000 hours
Discharge Time	18-24 Hr
Charging Time	6-8 Hr
Working mode	Light Control, Time Control
Work temperature	charging :0°C-+60°C discharging: -20°C-+60°C storage: -30°C -+45°C
Application	Street/Backyard and so on.
Install height	6-7M
Warranty	3 years

Motion Sensor Mode

电池满电的情况下:

In case battery fully charged

第1小时	不感应30%	感应后100%	假设感应频繁
1st hour	without any motion 30%	motion detected 100%	in case motion frequently
	1350LM	4500LM	

第2 - 3小时	不感应30%	感应后90%	假设感应频繁
2nd ~ 3rd hour	without any motion 30%	motion detected 90%	in case motion frequently
	1350LM	4000LM	

第4 - 5小时	不感应20%	感应后60%	假设感应频繁
4th ~ 5th hour	without any motion 20%	motion detected 60%	in case motion frequently
	900LM	2700LM	

第6 - 12小时	不感应10%	感应后30%	假设感应不频繁
6th ~ 12th hour	without any motion 10%	motion detected 30%	in case only few motion
	450LM	1350LM	

Product Feature



Made of sturdy aluminum alloy



The overall use of A arm structure, with A good weighing capacity, no fear of wind and rain

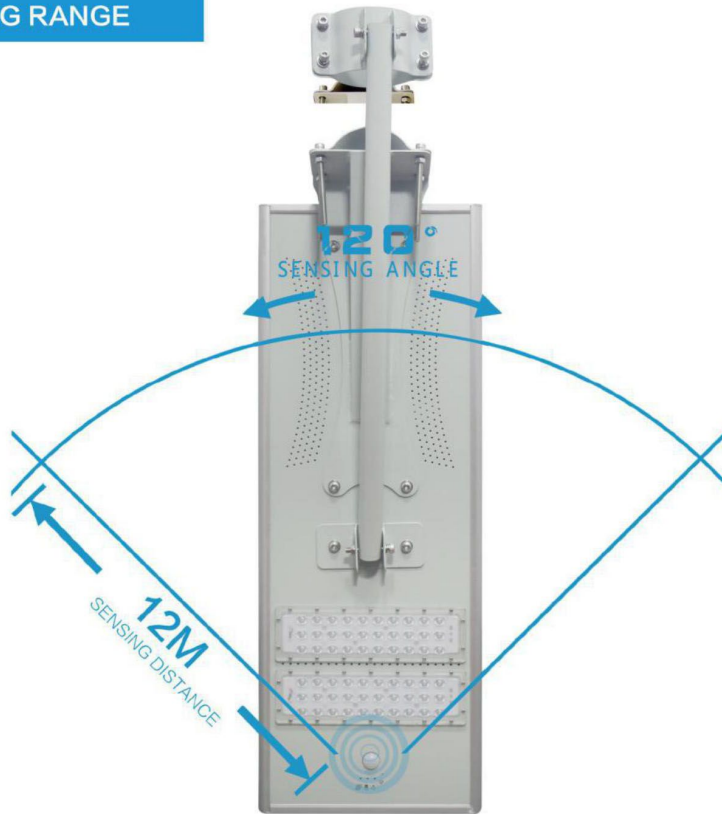


Three control modes to meet a variety of installation environments



Modular 3030 light source, super high brightness

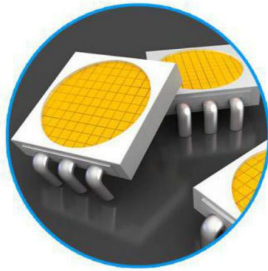
SENSING RANGE



SENSING EFFECT

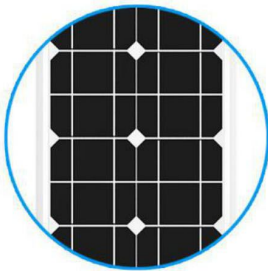


MATERIALS INTRODUCTION:



LED ENERGY-SAVING LIGHT SOURCE:

Imported USA Bridgelux LED, super high light efficiency, long-lasting lighting



SOLAR PANEL:

High-efficiency Monocrystalline solar panel, high conversion rate, special surface treatment



ALUMINIUM ALLOY:

Smooth aluminum alloy to reinforce shell, overall sturdy and durable, the surface is treated with special paint, sensory high-end atmosphere

PRODUCT ADVANTAGES



Easy to install and maintain



Multiple control modes for easy operation



Long life span of LED chip



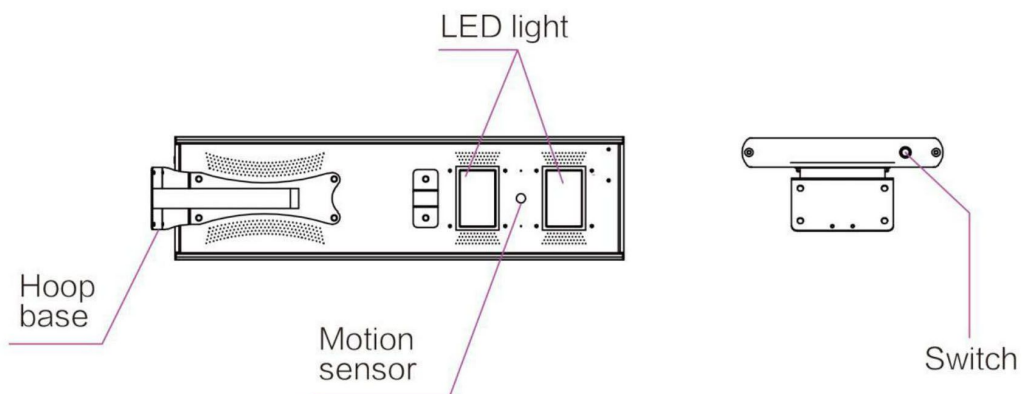
Monocrystalline solar panel, high conversion rate



Intelligent turn-on lighting mode

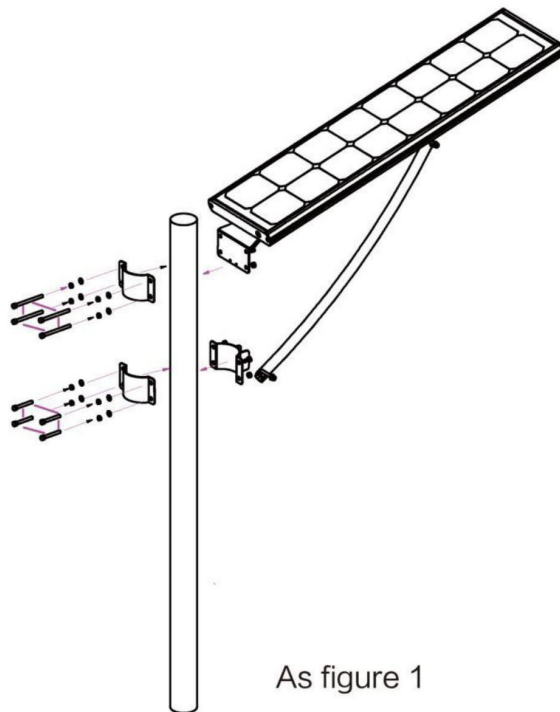
Installation Procedure:

1. Choose the best position for lighting.
2. Open the package and check if the accessories are complete.
3. Turn on the switch of the lamp body before installation



Blue is the charging indicator:	Green is the battery indicator:	Red is the LED light source work indicator:
<p>Slow flashing means charging, full light means fully charged, and turning off light means no charging</p>	<p>Full light indicates that the battery is normal and can work normally; slow flashing indicates low battery and cannot work normally, need to charge right now</p>	<p>When the LED light source is working, the red indicator light is fully illuminated. When the LED light source is not working, the red indicator light is off.</p>

4. First install one end of the arm on the lamp body, and then put the solar panel of the lamp body upward, and fix it with the hoop base (As figure 1)



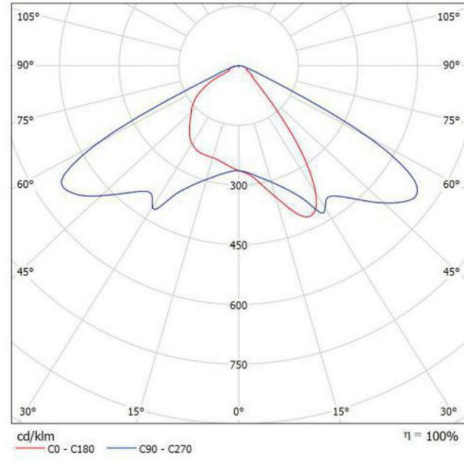
As figure 1

Warm prompt:

- During installation, one or two people shall hold the lamp body, and another person shall tighten the nut, so as to avoid misplacement of the nut due to force during the tightening process, or would result in nut sticking and subsequent undisassembly;
- It is recommended to install on a sunny day, because it can't be charged quickly after installation in rainy days, and it will be discharged at night, which will affect the using effect.
- If the lamp does not work after the package is opened, it is usually because the battery power is insufficient. Charge it for 2 days before installation.

Spectra:

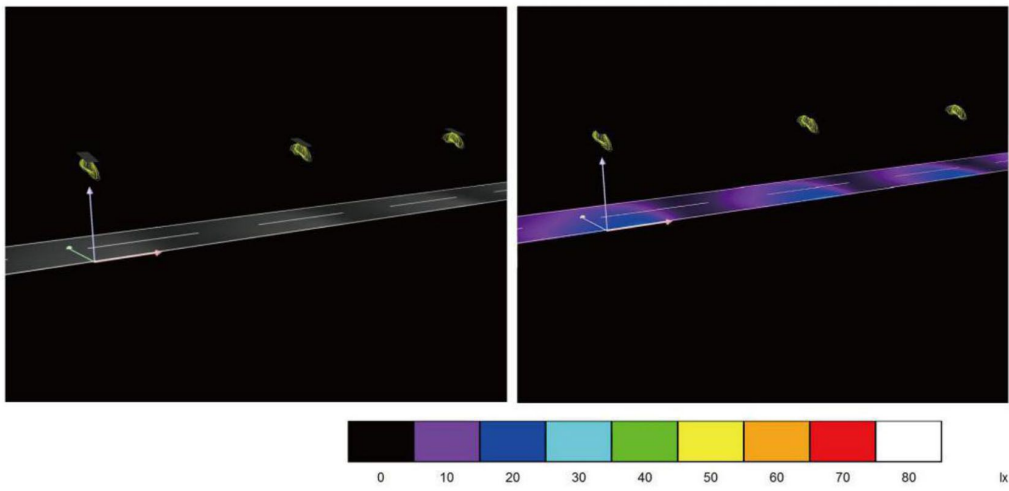
See our luminaire catalog for an image of the luminaire.



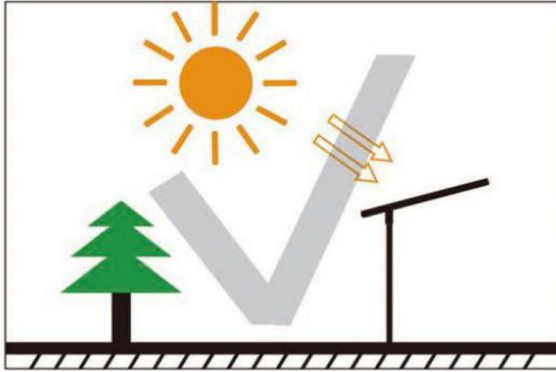
Luminaire classification according to CIE: 100
CIE flux code: 56 88 98 100 100

Due to missing symmetry properties, no UGR table can be displayed for this luminaire.

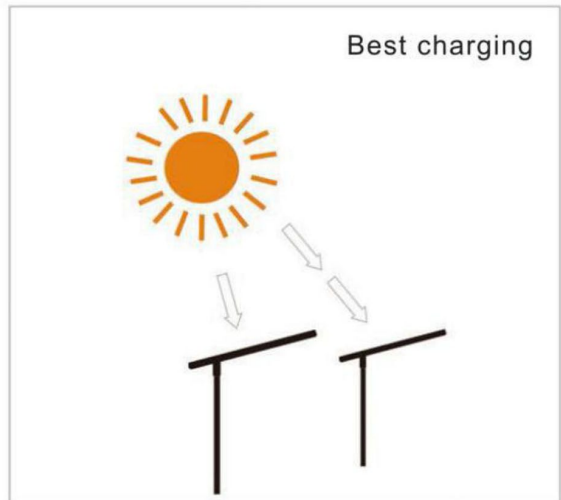
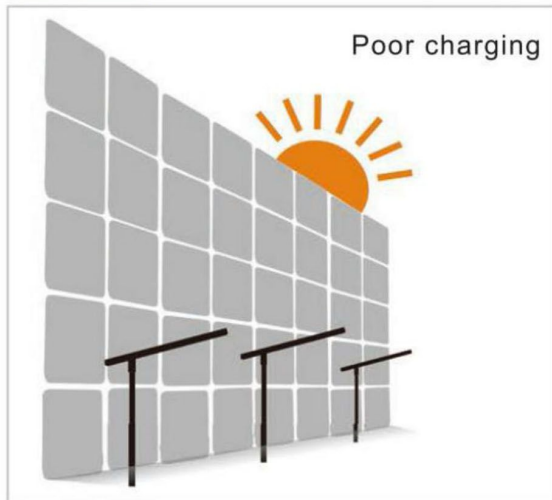
Road lighting simulation



Note 1



Note 2



- Please choose a place that is sunny and fully exposed, then install integrated solar street lights.
- And note that the solar panels must be unobstructed and must be exposed to the sun.

Case shows:



Road



Mountains



Rural



Street



Square



Park



School

