



Born for Sun.
Light for You.



1500W Pure sine wave inverter

HES, PS1500 1500W inverter delivers top features and performance at an economical price. It is a pure sine wave inverter, sure power 3000W. PS3000 has a compact footprint that saves space and simplifies installation – there are fewer components and cables install.

HES inverter's excellent overload capacity ensures that even critical loads can be operated easily.

Features

- True sine wave voltage
 - Pure Sine Wave output (THD<3%)
 - Peak Power: 3000W
 - Output efficiency: 92%
 - LED show: Inverting(G), Fault(R)
 - Intelligent cooling fan
- Excellent overload capabilities
Best reliability

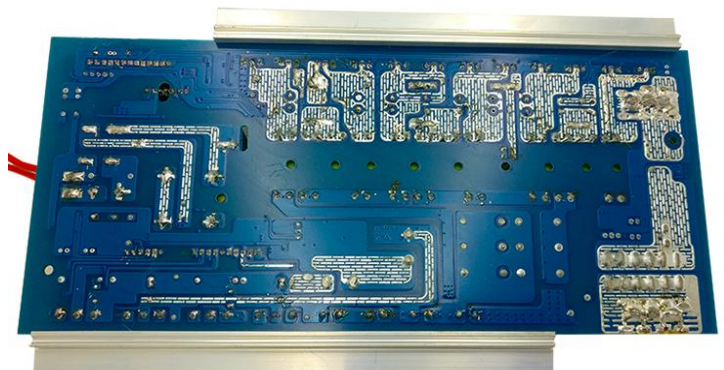


Protections

- Low voltage alarm, Low voltage cutoff, Over voltage,
- Over temperature, AC Overload,
- AC Output short circuit

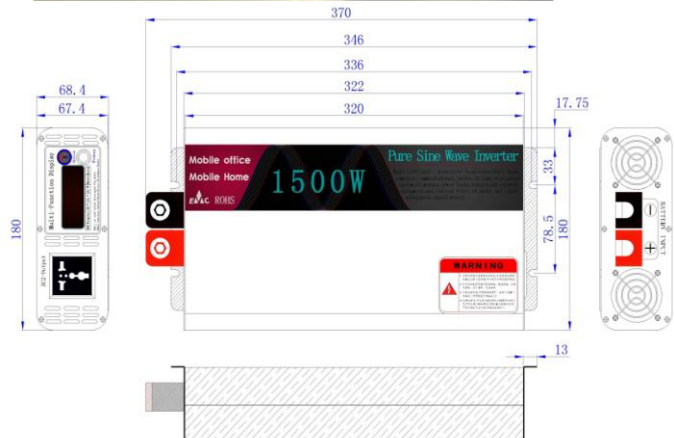
Application

- Household appliance, Power tools,
- Automobile,
- Office and portable equipment, Yacht,



Certifications

CE ISO9001





Model		PS1500-112□	PS1500-124□	PS1500-148□
		PS1500-212□	PS1500-224□	PS1500-248□
Output	Rated power	1500W		
	Peak Power	3000W		
	AC	Default setting: 110VAC		Default setting: 230VAC
		100/110/115/120VAC(According to requirement)		210/220/230/240VAC(According to requirement)
	Frequency(Hz)	60Hz±0.5Hz		50Hz±0.5Hz
	Wave form	Pure sine wave （THD<3%）		
	AC Adjusted rate	± 3.0%		
	Panel LED show	Inverter, Fault		
Input	Battery Voltage	12V	24V	48V
	Voltage Rrange	10-15VDC	20-30VDC	40-60VDC
	DC Current	150A	75A	37A
	No load Current Draw	≤0.71A/8.5W	≤0.35A/8.5W	≤0.18A/8.5W
	Efficiency	90%	91%	92%
	Battery	Open&sealed lead-acid battery(Customized lithium battery parameter)		
Battery Input Protection	Internal Fuse	40A*6	20A*6	10A*6
	Low voltage alarm	11V±4%	22V±4%	44V±4%
	Low voltage cutoff	10V±4%	20V±4%	40V±4%
	Battery reverse polarity protection	Fuse down		
Output Protection	Over temperature protection	Temperature over 70℃±3℃,output stop ,Buzzer sound 5 times every 1sec,solid red light		
		Temperature under 60℃±5℃,Automatic Recovery		
	Overload protection	120%～150% rated load,alarm 10sec and turnoff, resetting switching automatic recovery		
		150% rated load over 2sec turn off,resetting switching automatic recovery		
	Short circuit protection	(Automatic Recovery)turn off output volatge,remove loads,Automatic Recovery		
Environmnet	Working temperature	0℃～+40℃@100% rated power load		
	Working humidity	30%～90% RH, No condensation		
	Storage temperature&Humidity	- 30℃ ～ +70℃		
	Vibretion resistance	10～500HZ 2G 10min/cycle,X、 Y、 Z axis 60min respectively		
Safety&EMC	Safety specification	Conforming to standards CE,ROSH		
	Breakdown test	Bat-PG:500VAC Bat-AC:1.5KVAC AC-FG:1.5KVAC		
	Insulation Resistance	Bat-PG,AC -FG:100M Ohms/500VDC/25℃/70%RH		
Other	MTBF	≥60Khrs.MIL-HDBK-127F(25℃)		
	Cooling	Load&temperaturred cooling fan		
Packing	Product size	37cm×18cm×7cm		
	Product N.W.	2.8Kg		
		47.5cm x 43cm x 40.5cm		
	Master Carton	6PCS/CTN 21.6KGS/CTN		
Remarks	1、 Efficiency, AC regulation and THD are tested by 60% rated power linear load at （12.8V/25.6V/51.2V input voltage 2、 All parameters not specified above are measured at rated load,25℃ ambient Temperature 3、 Output derating curve refer Figure1(Base on environment temperature) 4、 Output derating curve refer Figure 2(Base on battery voltage) 5、 Packing size tolerance is acceptable			

To find out more visit www.henergysolutions.com

All specifications and information are given with good intent, errors are possible and products may be subject to change without notice. Pictures may differ from actual products depending on local market re-quirements and regulations. A solar power system consists of a controller, inverter and load end. Multiple controllers/inverters are shown to represent the wide range that HES has.