



Born for Sun.  
Light for You.



## 2000W Pure sine wave inverter

HES, KS2000 2000W inverter delivers top features and performance at an economical price. It is a pure sine wave inverter, sure power 4000W. KS2000 has a compact footprint that saves space and simplifies installation – there are fewer components and cables install.

HES inverter's excellent overload capacity ensures that even critical loads can be operated easily.

### Features

- True sine wave voltage
  - Pure Sine Wave output (THD<3%)
  - Peak Power: 4000W
  - Output efficiency: 92%
  - LED show: Inverting (G), Fault (R)
  - Intelligent cooling fan
- Excellent overload capabilities  
Best reliability

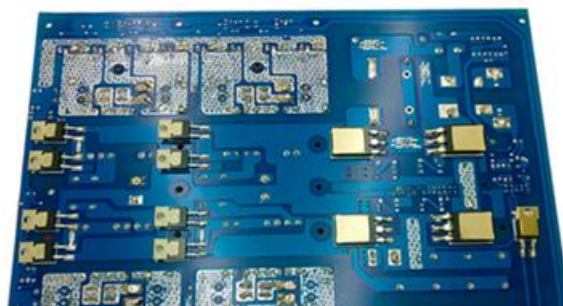


### Protections

Low voltage alarm, Low voltage cutoff, Over voltage, Over temperature, AC Overload, AC Output short circuit

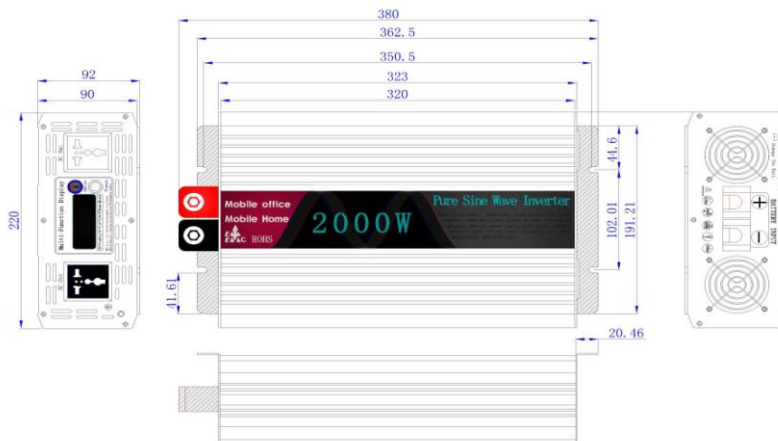
### Application

Household appliance, Power tools, Automobile, Office and portable equipment, Yacht,



### Certifications

CE ISO9001





## Specification

Model		KS2000-112□	KS2000-124□	KS2000-148□
		KS2000-212□	KS2000-224□	KS2000-248□
Output	Rated power	2000W		
	Peak Power	4000W		
	AC	Default setting: 110VAC		Default setting: 230VAC
		100/110/115/120VAC(According to requirement)		210/220/230/240VAC(According to requirement)
	Frequency(Hz)	60Hz±0.5Hz		50Hz±0.5Hz
	Wave form	Pure sine wave（THD<3%）		
	AC Adjusted rate	± 3.0%		
	Panel LED show	Inverter, Fault		
Input	Battery Voltage	12V	24V	48V
	Voltage Range	10-15VDC	20-30VDC	40-60VDC
	DC Current	200A	100A	50A
	No load Current Draw	≤0.85A/10W	≤0.42A/10W	≤0.21A/10W
	Efficiency	90%	91%	92%
	Battery	Open&sealed lead-acid battery(Customized lithium battery parameter )		
Battery Input Protection	Internal Fuse	40A*8	20A*8	10A*8
	Low voltage alarm	11V±4%	22V±4%	44V±4%
	Low voltage cutoff	10V±4%	20V±4%	40V±4%
	Battery reverse polarity protection	Fuse down		
Output Protection	Over temperature protection	Temperature over 70℃±3℃,output stop ,Buzzer sound 5 times every 1sec,solid red light		
		Temperature under 60℃±5℃,Automatic Recovery		
	Overload protection	120%～150% rated load,alarm 10sec and turnoff, resetting switching automatic recovery		
		150% rated load over 2sec turn off,resetting switching automatic recovery		
Environmnet	Short circuit protection	(Automatic Recovery)turn off output volatge,remove loads,Automatic Recovery		
	Working temperature	0℃～+40℃@100% rated power load		
	Working humidity	30%～90% RH, No condensation		
	Storage temperature&Humidity	- 30℃ ～ +70℃		
Safety&EMC	Vibretion resistance	10～500HZ 2G 10min/cycle,X、 Y、 Z axis 60min respectively		
	Safety specification	Conforming to standards CE,ROSH		
	Breakdown test	Bat-PG:500VAC Bat-AC:1.5KVAC AC-FG:1.5KVAC		
	Insulation Resistance	Bat-PG,AC -FG:100M Ohms/500VDC/25℃/70%RH		
Other	MTBF	≥60Khrs.MIL-HDBK-127F(25℃)		
	Cooling	Load&temperated cooling fan		
Packing	Product size	38cm×22cm×9.2cm		
	Product N.W.	4.8Kg		
	Master Carton	2PCS/CTN 14KGS/CTN		
Remarks	1、 Efficiency, AC regulation and THD are tested by 60% rated power linear load at （12.8V/25.6V/51.2V input voltage 2、 All parameters not specified above are measured at rated load,25℃ ambient Temperature 3、 Output derating curve refer Figure1(Base on environment temperature) 4、 Output derating curve refer Figure 2(Base on battery voltage) 5、 Packing size tolerance is acceptable			